

MONTHLY MEMBERSHIP PROGRESS REPORT

LOCATION NEBRASKA

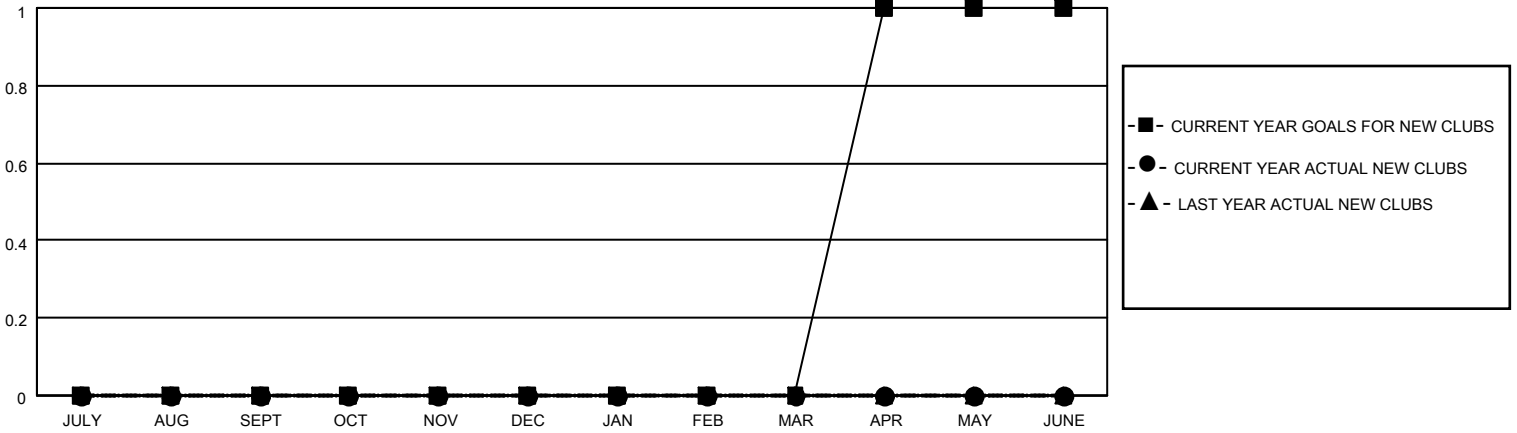
District 38 I

Results as of: 5/31/2021

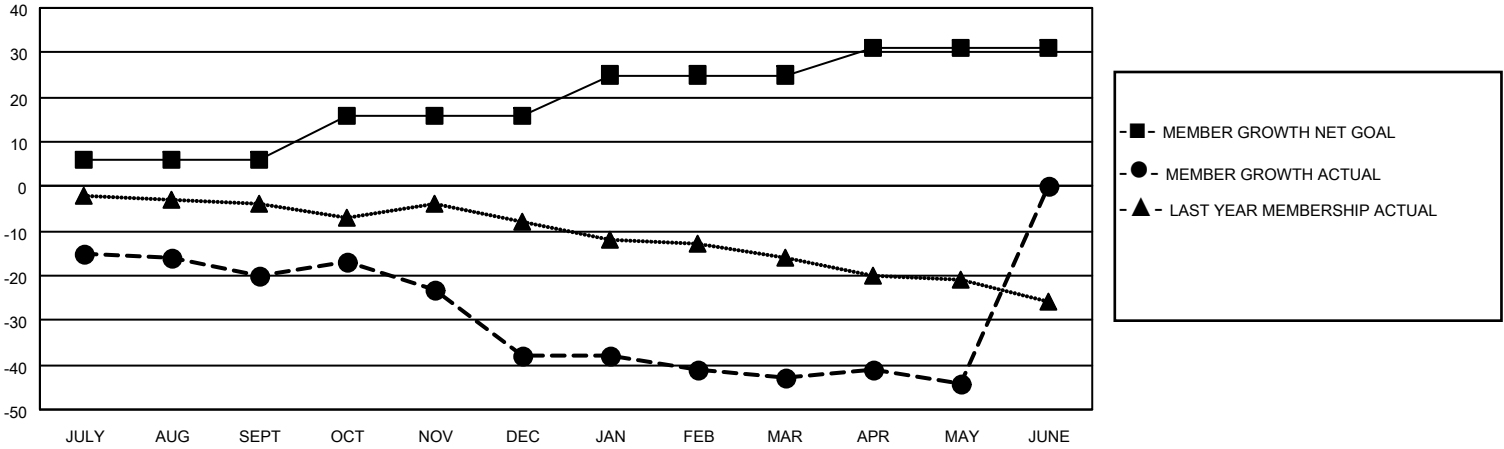
Clubs			
RESULTS FOR 2020-2021			
QUARTER	NEW CLUB GOAL	NEW CLUBS	DROPPED CLUBS
JULY/AUG/SEPT	0	0	0
OCT/NOV/DEC	0	0	2
JAN/FEB/MAR	0	0	0
APR/MAY/JUNE	1	0	0

Members			
RESULTS FOR 2020-2021			
QUARTER	MEMBER GROWTH NET GOAL	MEMBER GROWTH ACTUAL	DROPPED MEMBERS ACTUAL (including transfers)
JULY/AUG/SEPT	6	12	30
OCT/NOV/DEC	10	9	27
JAN/FEB/MAR	9	7	11
APR/MAY/JUNE	6	9	10

GOALS AND ACTUAL NEW CLUBS CUMULATIVE



GOALS AND ACTUAL MEMBERS CUMULATIVE



DROPPED CLUBS: 2

15 CLUBS OF 35 ADDED 1 OR MORE NEW MEMBERS

<u>GENDER DISTRIBUTION</u>	
MALE	570 (71.97%)
FEMALE	222 (28.03%)

<u>DROPPED MEMBERS</u>	
DECEASED	17
CLUB CANCELLED	10
OTHER	51
TOTAL	78

[CLICK HERE FOR CUMULATIVE MEMBERSHIP DATA](#)

TOTAL FAMILY UNIT MEMBERS	196
FAMILY MEMBERS PAYING HALF DUES	99